

Pitch Tendency Chart Guide

Trombone

Basic Tuning Rules

1. Warm up thoroughly before tuning
2. Always use sufficient air support and play at a mezzo forte dynamic level.
3. Do not use vibrato or try to manipulate the tuning note—play it straight.
4. Before completing the chart, tune to the pitches shown below. Adjust the tuning slide if pitch is sharp or flat.

Your Tuning Notes

Play quarter note pitches to help “prep” the tuning notes (the half note pitches).



Your Tuning Mechanism

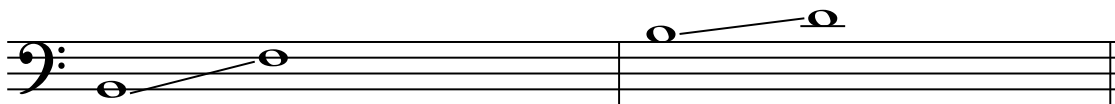
Tuning slide. Pull out the tuning slide if the pitch is sharp, push it in if the pitch is flat.

If you have an F attachment, you must tune it by playing the fourth line F on the open horn, then engage the F attachment and match the pitch. If the pitch played with the F attachment is sharp or flat, pull out or push in the F attachment tuning slide.

How to Adjust a Pitch While Playing

- Slide adjustment—move the slide in or out while playing to alter pitch.
- Alternate slide positions.
- Although you can adjust pitch with embouchure pressure (increasing pressure raises pitch, decreasing pressure lowers it), it is rare since you have the ability to adjust pitch with your slide.

Common Out of Tune Notes



Sharp 3rd partial notes

Flat 5th partial notes